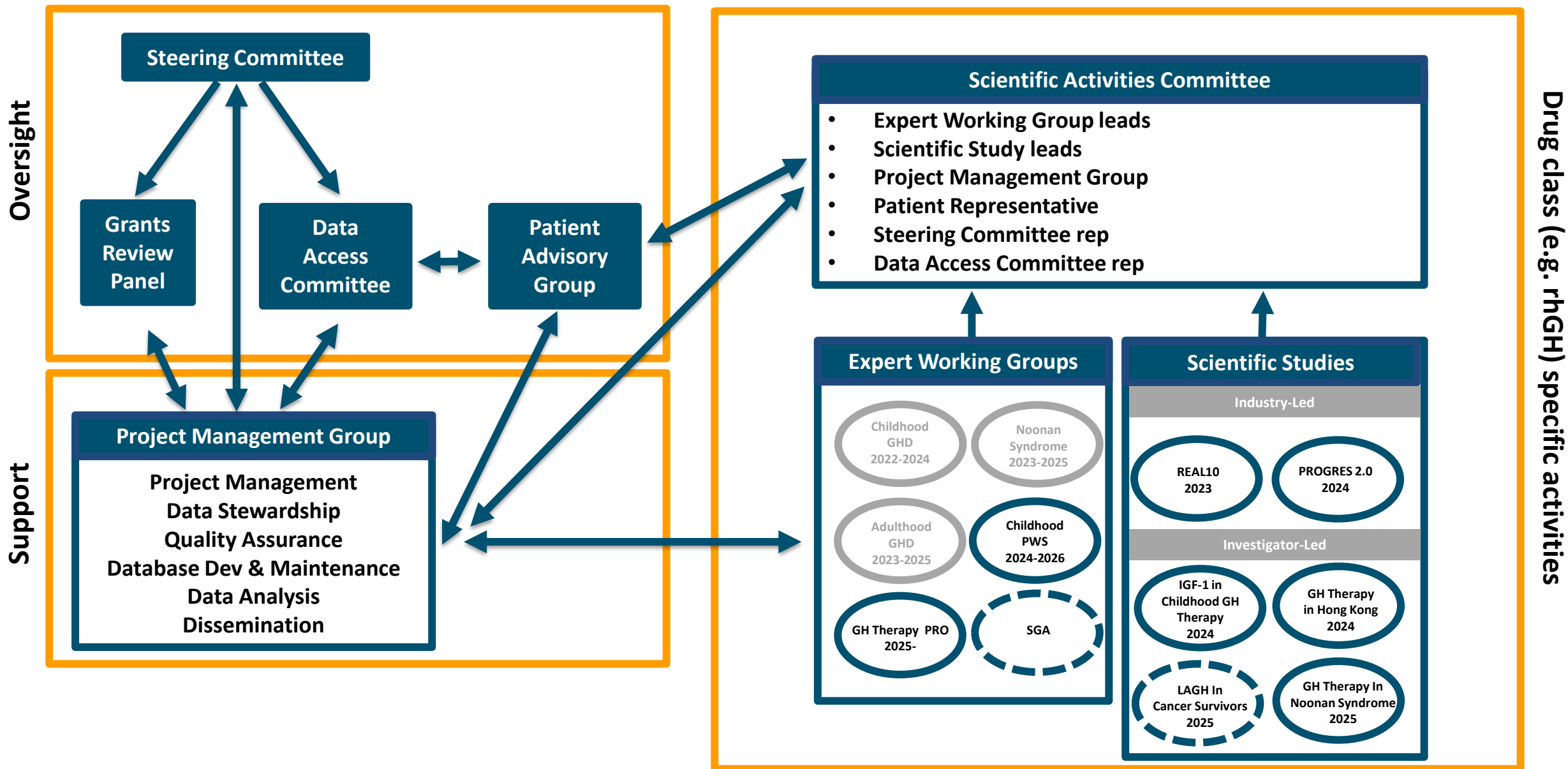
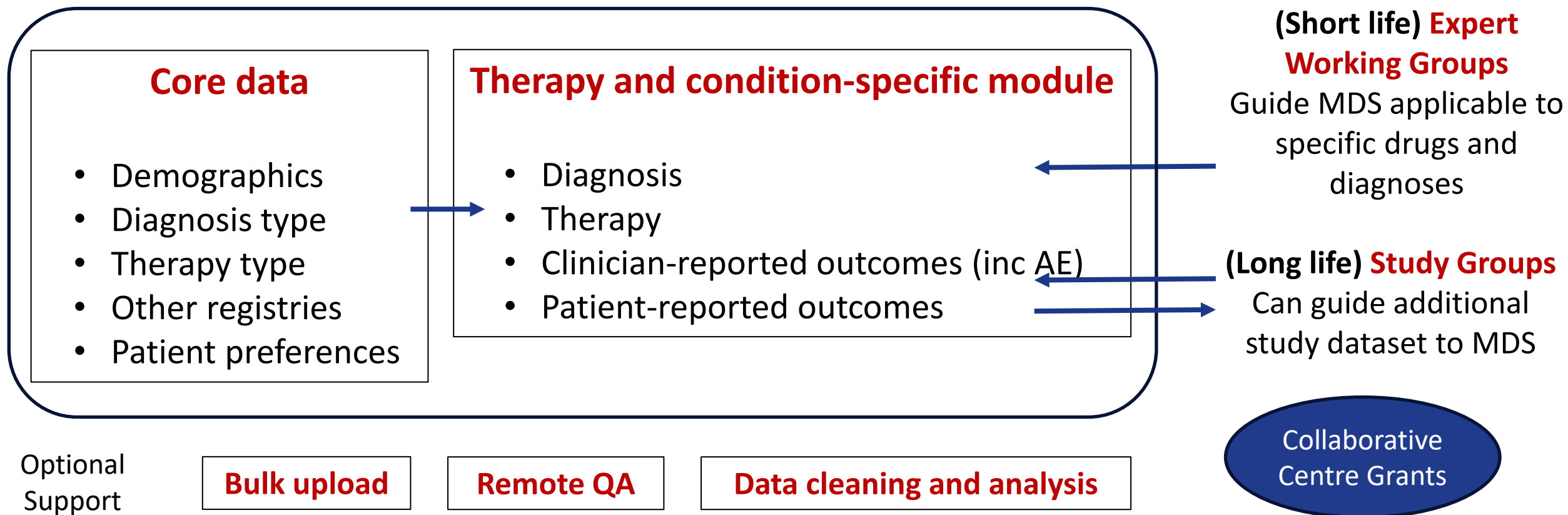
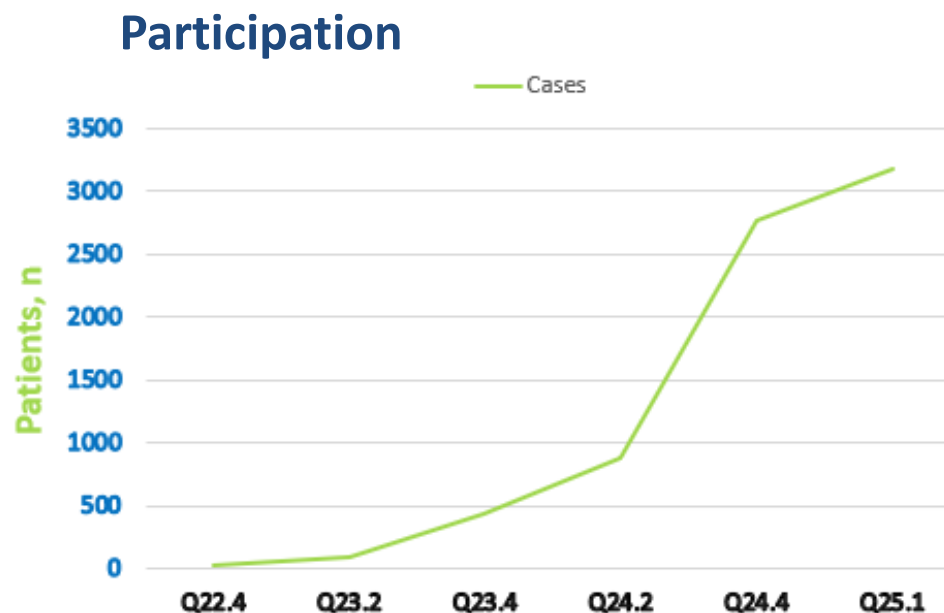
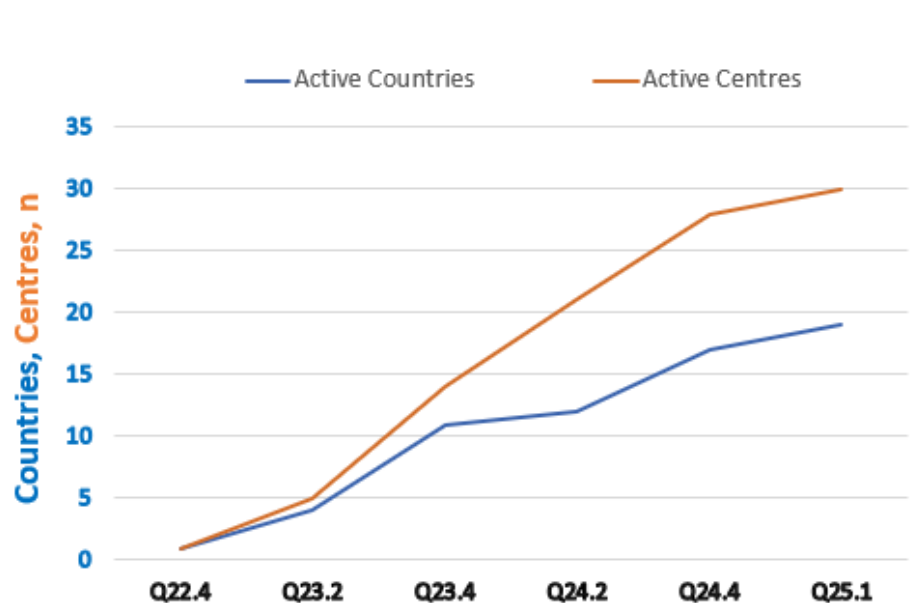


- Support studies on effectiveness and long-term safety through collection of minimal real-world data
- Act as a sustainable registry that can study several drugs and indications
- Build an inclusive community that maximizes the use and re-use of data
- Work in collaboration with other registries to improve global knowledge
- Shift the community away from industry-held/sponsored registries
- Build on the long-standing experience that the Glasgow team has in working with the international endocrine community in the field of registries

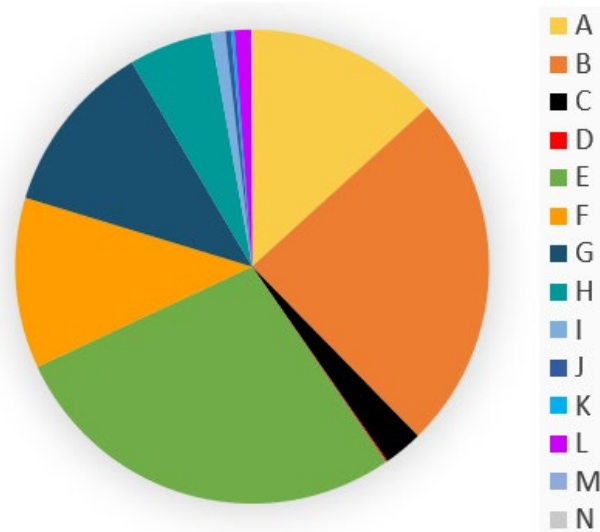


.NET Framework, C#, Javascript, HTML were developed for simplicity and administrator-level customization of modules and case report forms

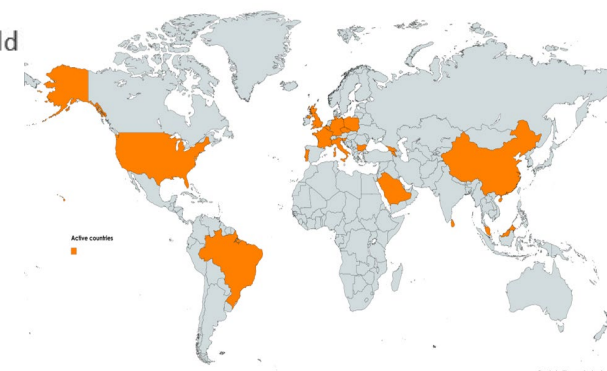
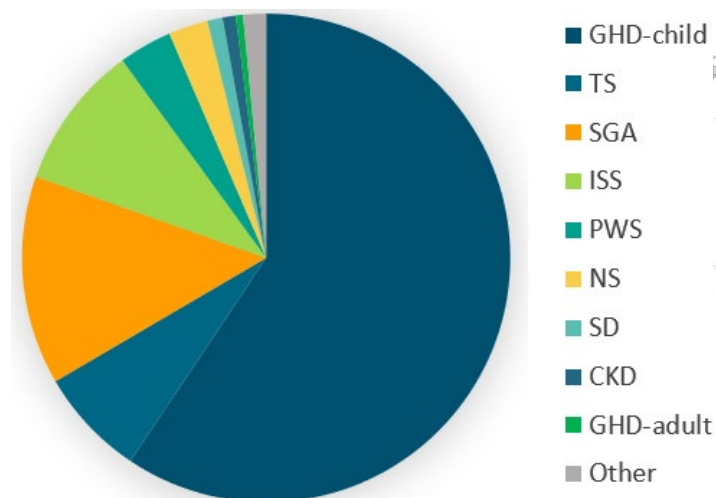




rhGH
Brands



rhGH
Indications



Office for Rare Conditions Registries



Salma Ali
Clinical Lecturer



Angela Lucas-Herald
Senior Lecturer



Jillian Bryce
Project Manager



Faisal Ahmed
Project Lead



Malika Alimussina
Clinical Scientist



Ching Chen
NRS Fellow



Sanhita Koley
Data Scientist



Martin McMillan
Project Support



Joe McElvaney
Clinical Fellow



Yolanda Johnson
Senior Finance Admin



Minglu Chen
Senior Project Support



Chris Smythe
Registry Development



Jessica Anderson
PhD Student



Karyn Cooper
Admin Support

